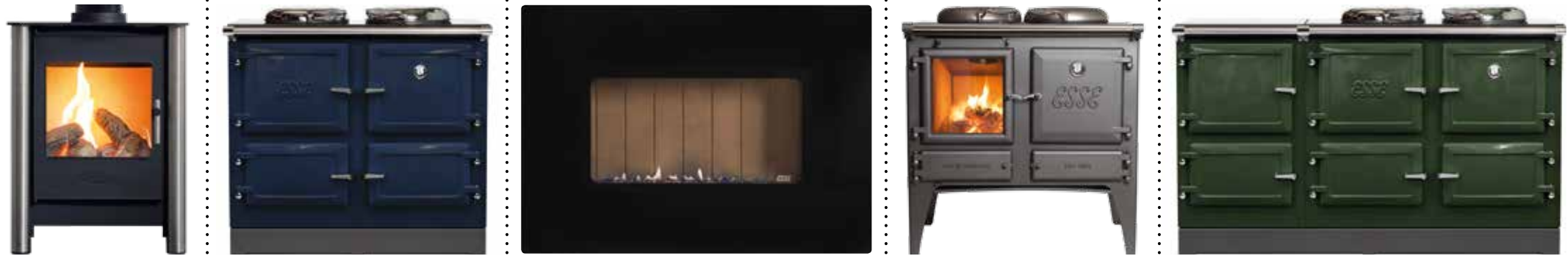


WELCOME
— TO THE —
ESSE
FAMILY

MASTER
STOVE
MAKER
SINCE 1854



A FAMILY OF STOVES, COOKERS, GAS FIRES & ELECTRIC HEATERS

ESSE stoves have been at the warm heart of the home for more than 160 years. While heating trends may have evolved since we produced the first ESSE stove in 1854, we believe the soothing glow and comforting warmth of natural flame remains the cosiest source of home heating as the cold winter nights draw in.

Although ESSE products maintain the look and feel of traditional stoves and cookers, the innovation that underpins these appliances is very definitely 21st century.



THE ORIGINS OF — ESSE —

A METALWORK APPRENTICESHIP IN NEW YORK

CARING FOR SOLDIERS IN THE CRIMEA

OUTSTANDING ENDURANCE IN THE ANTARCTIC



OVER 160 YEARS IN THE MAKING

ESSE's founding partner James Smith established the company in 1854. Born in Edinburgh in June 1816, James set sail for New York to make his fortune at the tender age of 16.

James apprenticed himself to a metal worker and his work took him to New Orleans before he struck out on his own in Jackson, Mississippi.

The business quickly prospered, enabling James to return to Britain to manufacture stoves. It was on a final trip to the States to hand over his US interests to brother Robert that James

had a life-changing experience. He spent three days' clinging to a makeshift raft after his steamer sank following a collision mid-Atlantic.

Emboldened by his miraculous escape, James formed a business partnership with his old friend Stephen Wellstood and later, with the addition of a third partner, George Ure, the trio established the Columbian Stove Works, which later became ESSE – the continental-sounding name reflecting the fashion at the time.



NIGHTINGALE'S FAVOURITE

Florence Nightingale was passionate about ESSE cookers and would use no other brand at her field hospital in Balaclava.

The 'Lady with the Lamp' famously cared for British soldiers fighting in the Crimean War. During this time, she wrote us a letter of appreciation, below left.

"I beg to acknowledge the receipt of your letter of the 28th January and to say that the stove you kindly sent us is now at the Castle Hospital, Balaclava. I beg to add that I have shown it to Monsieur Soyer, who greatly approved of it. Indeed, its merits were already known to him. I beg to repeat my thanks for this very useful contribution..."

Florence Nightingale

ESSE TRAVELS TO THE ENDS OF THE EARTH

Sir Ernest Shackleton relied on an ESSE stove to provide hot food and warmth for his Antarctic expeditions. The adventurer's shore base at Cape Royds on Ross Island was heated by an ESSE 'Mrs Sam' cooker with boiler.

Shackleton's 15-man shore party lived in this hut through the winter of 1908 prior to their 'Farthest South' expedition and reaching the summit of Mount Erebus – exploits for which he was knighted by King Edward VII on his return to Britain.

The hut – along with the redoubtable Mrs Sam stove – still stands amid the icy floes of the Antarctic. For those who would like to verify that it's still there, the stove chimney is actually visible on Google Earth (simply key in 'Shackleton's Hut', Antarctica. There isn't a postcode.)

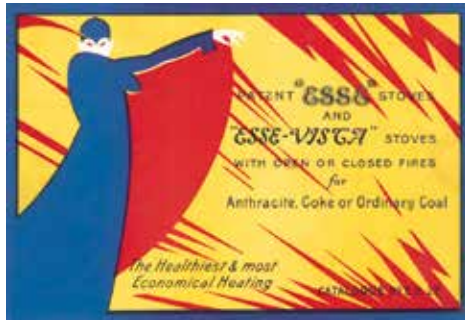


160 YEARS OF DISTINCTIVE ADVERTISING

Like our products, ESSE adverts have always stood out from the crowd. Over the last 160 years, ESSE has combined eye-catching artwork with confident messaging that appeal in equal measure to both hearts and minds.



1900 Believed to be the first British stoves designed to burn anthracite efficiently, the Bontesse, Artesse & Francesse led to the adoption of the trade name ESSE.



1929 The original Vista stove was launched in 1929 as the ESSE Dura Vista and the signature door arch styling remains the hallmark of ESSE's current Vista range.



1910 The iconic Kudos was an early example of an enamelled cast iron cooker to which professional cooks and chefs aspired, and it featured heavily in many of ESSE's campaigns of the era.



1951 ESSE's range of coal-burning 'heat storage' cookers expanded in tandem with the company's growing reputation for producing the most advanced appliances in the world.



1952 ESSE became the preferred choice of the celebrity chefs of the day such as Paul Boettiger and Albert Surtees because they appreciated the precision and control ESSE stoves offered.



1953 ESSE produced a distinctive brochure to commemorate the coronation of HM Queen Elizabeth containing recipes for hosting an exquisite celebration dinner.



1954 As post-war austerity began to ease, ESSE focused on the aspirational aspects of owning a state of the art range cooker for a new breed of eager consumers.



2017 ESSE commissioned British graphic artist Andrew Davidson to produce this contemporary pastiche for a consciously retro campaign connecting old and new in 'Country Life' magazine.



2018 Garry Walton's striking artwork reflects ESSE's 160-year reputation as a dependable source of warmth and sustenance at the heart of the home and updates these values for the 21st Century.

A PRINCE
.....
KATE
HUMBLE
&
RIVER
COTTAGE
=====
ALL POWERED BY ESSE

Over the years we've had a number of endorsements from enthusiastic cooks who insist on ESSE. From Dumfries House to Kate Humble's rural retreat in Wales and River Cottage HQ, you'll find our beautifully hand-crafted stoves and cookers at the heart of the kitchen.



A quartet of high quality ESSE stoves were installed at Dumfries House in Ayrshire as part of the ambitious restoration project in which HRH Prince Charles took a personal interest.

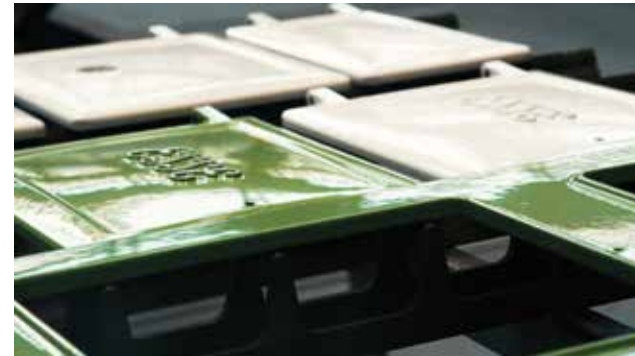
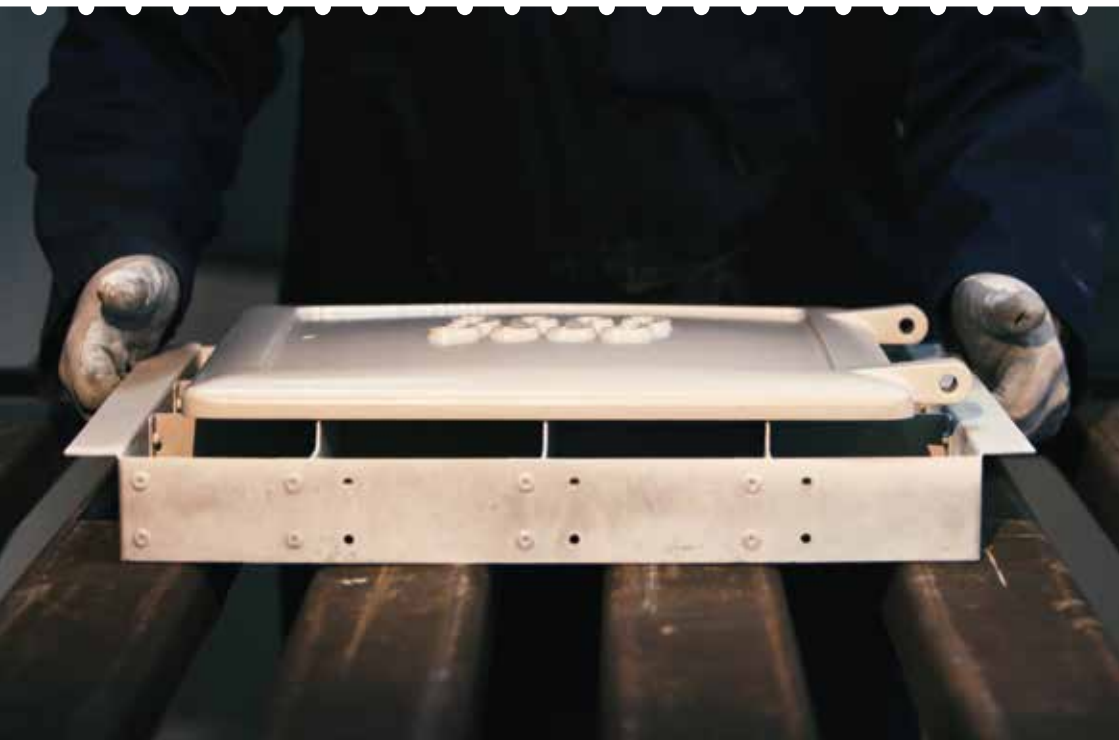
In 2007 ESSE became the cooker of choice at River Cottage HQ in Devon. Initially we installed an Ironheart as the sole source of heat while the ancient farmhouse was under restoration.

An ESSE cooker was also installed in the farmhouse kitchen, which can be regularly seen in use on the popular Channel 4 series. River Cottage chefs Gill Meller and Tim Maddams continue to use ESSE range cookers for their cooking demonstrations.

ESSE's innovative electric range cooker was chosen by Kate Humble for the cookery courses at her working farm in the Wye Valley, Wales. With ESSE's rural British heritage and commitment to promoting the use of locally-sourced ingredients, the partnership made perfect sense.



HANDCRAFTED IN BRITAIN — SINCE — 1854



BUILDING A PARTNERSHIP FOR LIFE

ESSE stoves and range cookers are hand-made with pride and passion by a dedicated team of skilled craftsmen at our factory in Barnoldswick, Lancashire

The very first ESSE stove was produced in 1854 with production shifting to the company's current manufacturing base in Barnoldswick in the 1980s.

Throughout the latter half of the 19th Century, the company established an unrivalled reputation for producing high quality stoves and range cookers that became the preferred choice for hotels, commercial premises and private residences across Europe.

In the early 20th century, ESSE consolidated this reputation by developing some of the cleanest, most efficient and technologically advanced heating and cooking appliances.

Today, ESSE stoves and range cookers continue to be assembled by hand by a highly skilled workforce in Lancashire. We use British cast iron and steel and wherever possible we prioritise British component suppliers.

Our current portfolio of products includes a comprehensive range of wood-burning, gas and electric stoves and a growing family of innovative range cookers which can be powered by electricity or wood.

We continue to innovate and lead the market with the introduction of game-changing new products like the Vector

electric heater and the new 500 EL – a compact electric range cooker that will slot into almost any kitchen.

These landmark new products reflect a continued approach to high quality product design, manufacturing and performance at ESSE. Built to high standards, they offer the convenience and flexibility demanded by modern lifestyles.

At ESSE, we believe in building products to last and we approach customer relations with a similarly long-term outlook. We hope your purchase is the beginning of a partnership for life.



PIONEERS OF INNOVATION

ESSE's reputation for innovation is underpinned by more than a century and a half at the forefront of stove and cooker design.

When James Smith returned from America in 1854, his confidence in the technical superiority of the advanced stoves he had built in the US inspired him to set up his business in Britain. From the outset, James' mission was simple: invest heavily in research and design to build the best quality and most efficient stoves and range cookers available.

Launched in 1910, the appropriately named Pioneer was the first stove in Britain with a secondary combustion chamber which burned smoke particles before they entered the flue. Today, the same principles underpin ESSE's patented clean-burn solid fuel range cookers and stoves.

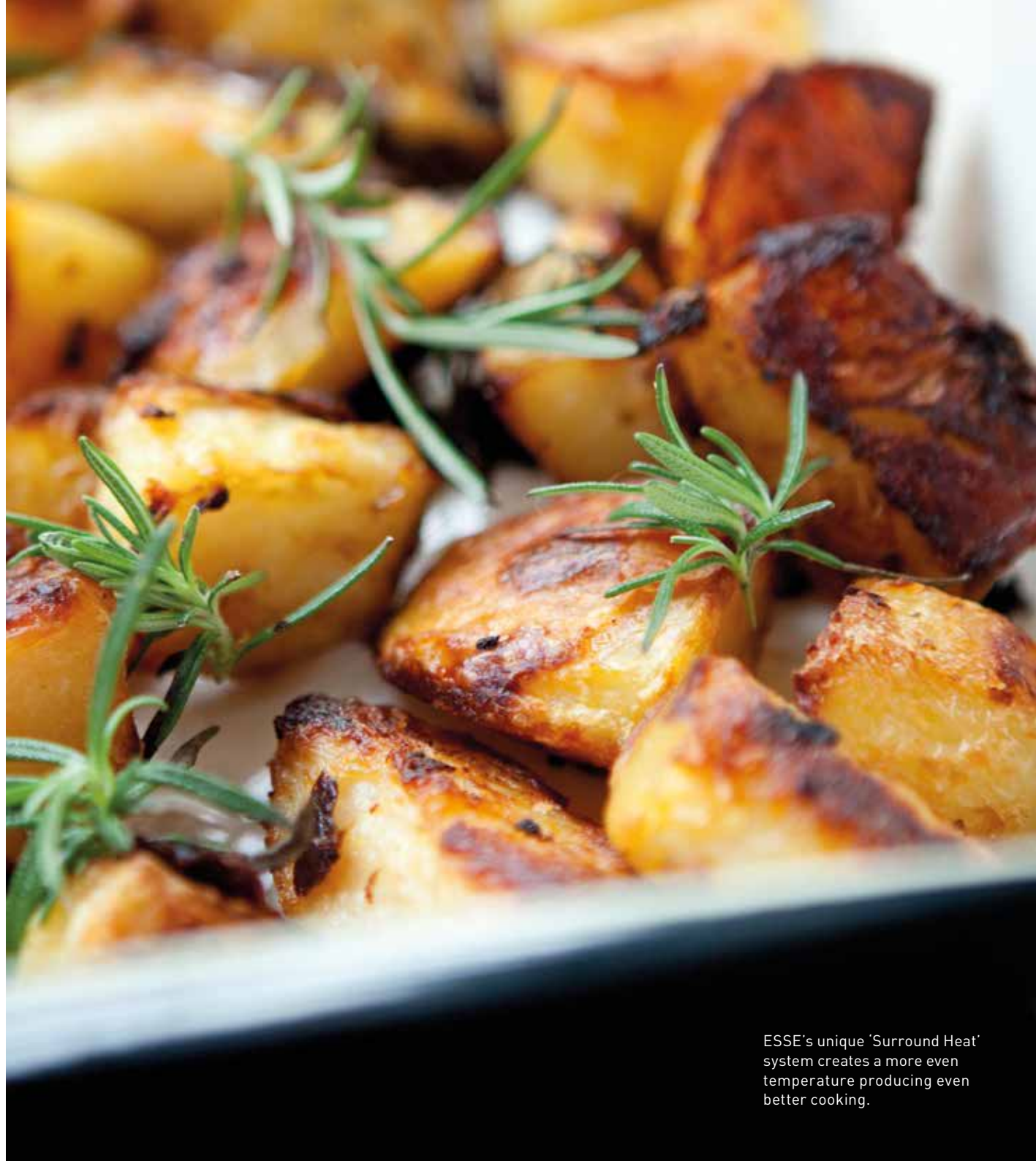
In recent years, ESSE's technological leadership has been recognised with British

patents. The twin catalytic converters incorporated in the 990 wood-burning range cooker ensure it's one of the cleanest burning appliances on the market.

This patented 'Clean Burn' system re-burns smoke particles produced in the firebox before they enter the flue – and is the latest refinement of a secondary combustion system pioneered by ESSE in the early 20th century.

In our range cookers, ESSE's patented 'Surround Heat' system means that the elements in our electric models wrap around each oven to deliver exactly the same radiant heat as our wood-burning and gas models. Temperatures remain consistent throughout the space during cooking, and dishes can even be placed directly on the base of the oven to cook.

These advances in the efficient use of clean and renewable heat sources are designed to keep ESSE at the forefront of heating technology and future-proof our products for years to come.



ESSE's unique 'Surround Heat' system creates a more even temperature producing even better cooking.



FANCY A BITE TO EAT?

FUELLED BY GOOD FOOD MADE BY ESSE

.....

Want to see an ESSE in action and taste the difference for yourself? Pop into our cosy, canalside cafe.

ESSE's Factory Cafe is open for breakfast and lunch seven days a week.

Located beside the Leeds-Liverpool canal on the edge of Barnoldswick, the cafe is next door to our Ouzledale factory, showroom and ESSE museum.

The menu features fresh soups, handmade pies, quiches, home-baked cakes and scones, with all dishes home-made daily on ESSE range cookers. It's a unique opportunity to witness ESSE in action – and to taste the ESSE difference for yourself. After all, the proof of the pudding is in the eating.

For menus, daily specials and upcoming events, find us @EsseFactoryCafe



Open for breakfast and lunch every day – including Sundays



ESSE

Contact us

Got a question for us here
at ESSE? Get in touch.

01282 813235
enquiries@esse.com
esse.com

ESSE Engineering Ltd.
Ouzledale Foundry
Long Ing
Barnoldswick BB18 6BJ